

Flapjack Workshop



Speakers: Carlos Vidal-Céspedes, Gonzalo Vidal and Guillermo Yáñez

Flapjack is our **data management** and analysis tool for synthetic biology, aimed to complete the Design, Build, Test, Learn cycle.

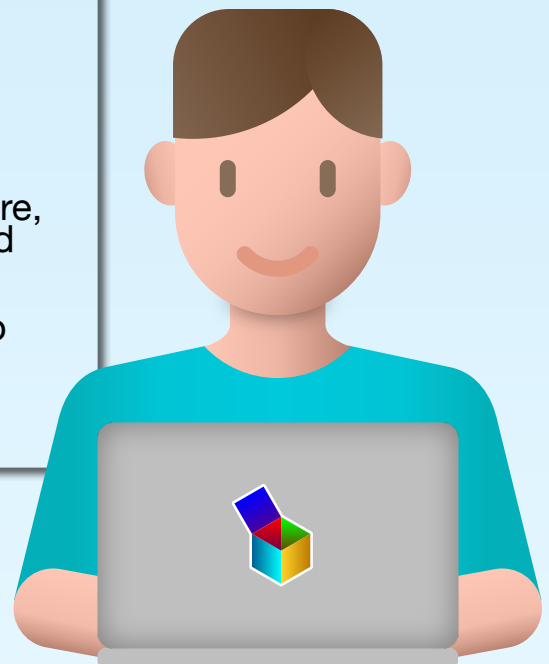


Experimental **data wrangling** can be a time consuming and frustrating process.

Flapjack puts you in control of your data, allowing you to **store** and perform the **analyses** that seem relevant to you in a quick and easy way.

Join us in our workshop, you will learn:

- Access and use Flapjack through the web app's user interface.
- Share data and work collaboratively.
- Visualize and analyze data using the Flapjack engine.
- Use pyFlapjack to access the API to store, explore, visualize, analyze and download data.
- Access SynBioHub instances in order to obtain genetic parts information.
- Install a local instance of Flapjack.



rudge-lab.org

   @rudgelab